

PROFILE



**SHAHZAD  
AYUB  
ASSOCIATES**

ARCHITECTS, ENGINEERS & PROJECT MANAGERS

## INTRODUCTION

SHAHZAD AYUB ASSOCIATES, based in Lahore, Pakistan, was established in year 2000. We take pride in introducing our firm as one of the prominent firms providing consultancy in complete engineering designs, estimation, evaluation of projects and Project Management.

SHAHZAD AYUB ASSOCIATES has diversified challenges of the market and customers that we serve. Our objective is to offer total quality designs at competitive prices backed by sound engineering application and provide with engineering precision. We strive to ensure that every enquiry is carefully considered and a pragmatic solution is provided that meets the application criteria for functionality, compatibility, reliability and last but surely not least cost effectiveness. The trust placed in us by our clients to achieve their goals of production efficiency and profitability is evident in our success. The company has a reputable name and we enjoy excellent business relations with our clients. Similarly we have wide range of experience in providing complete solutions for OMC's Sector including Complete Civil Mechanical & Electrical Engineering design, Project Management, Construction & Commissioning. We have wide range of experience in different kinds of building designs for industrial and commercial use. We have high quality equipments and an excellent work force to implement our projects.

The company has successfully carried out various projects that are mentioned in detail in the coming pages.



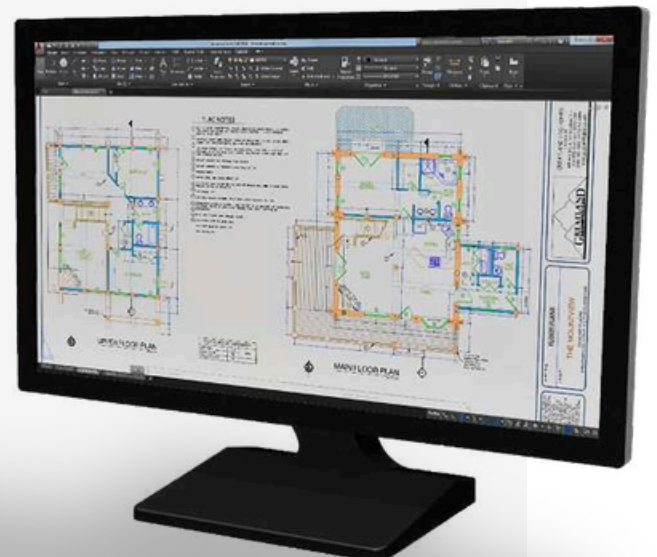
## FIELDS OF INTEREST

- Complete Design Solutions of Public Buildings, Commercial Buildings, Offices, Residential Buildings, Houses, Hotels, Motels, Hospital, Medical Facilities, Laboratories, Medical Research Facilities, Educational Institutes, Recreational Complexes, Sports Facilities, Stadium, Libraries, Museums & Galleries.
- Complete Construction Project Management & Supervision
- Design of Bridges and Culverts
- Structural Design of Telecom Infrastructure  
*(Towers, Foundations and allied Civil Works)*
- Structural Feasibility Reports of Existing Buildings for Roof Top Tower Erection or any other purpose
- Non-destructive Testing of R.C.C Structures
- Structural Strengthening Design of existing Buildings
- Infrastructure Design (Water Supply, Sewerage, drainage, Solid Waste Management system and Road Network) for Housing Societies
- Plumbing Design of Residential /Commercial /Public Building
- Landscape *(Irrigation)*
- Environmental Studies *(I.E.E and E.I.A)*
- Vetting of Designs *(Structural /Public Health /Electrical)*
- Electrical Designs
- Geo-technical Investigations
- Topographic Surveys
- Bidding /Tender Documents  
*(BOQ's, Engineer Estimate and Technical Specification etc.)*



## LIST OF A FEW VALUABLE CLIENTS

- Nokia Tietoliikenne Oy (*Finland*)
- Alan Dick & Company (*UK*)
- NoviaCom (*Saudi Arabia*)
- Palmet (*Turkey*)
- Bahria Town
- American International School System - *USA*
- Haleeb Food (Pvt.) Ltd. (*CDL*)
- Coca Cola (*Pakistan*)
- CM Pak Limited (Zong)/Paktel
- Huawei Technologies (Pvt) Ltd.
- Bandar Raya Developments
- Sambu JV/Construction
- BSM Developers
- New Metro City Gujjar Khan
- New Metro City Sarai Alamgir
- New Metro City Mandi bahauddin
- New Metro City Lahore
- Gawadar City
- Multan Chemical Limited (MCL)
- Arban Developers
- Wildlife and Parks Department, Punjab (PMU)



# LIST OF MEGA HOUSING PROJECTS

## 1. New Metro City, GujjarKhan(2023) 17,000 Kanals

Scope of Services	Project Name
<ul style="list-style-type: none"> <li>• Design of residential &amp; Commercial Buildings</li> <li>• Design of parks, roads, water supply, sewerage</li> <li>• Soil Investigation</li> <li>• Allied Amenities</li> <li>• Project Management</li> <li>• Supervision</li> <li>• Quality Check &amp; Control</li> <li>• Quantity Surveying</li> <li>• Vetting of Bills</li> <li>• Project Budget Management</li> </ul>	<ul style="list-style-type: none"> <li>• Clock tower</li> <li>• Corporate office</li> <li>• Dealer office</li> <li>• Electric room</li> <li>• Fire station r.c.c. floor</li> <li>• Fire station steel shed</li> <li>• Grating section road crossing</li> <li>• Hospital</li> <li>• Gym mart</li> <li>• Head office</li> <li>• Jamia Masjid Ruksana</li> <li>• Mosque al-farukh</li> <li>• Over head water tank</li> <li>• OGDCL-brick masonry culvert</li> <li>• R.C.C. culvert design for OGDCL pipe line</li> <li>• Residence</li> <li>• School roots</li> <li>• South railway nallah-2</li> <li>• Stone masonry gravity wall</li> <li>• Bridge – Trafalgar Square</li> <li>• Gym, mart, saloon swimming pool</li> <li>• Typical section of shoot for surface storm water drain beside avenue road metro canal</li> <li>• Underground water tank 400000 gallons A-south zone-1 collecting tank</li> <li>• Butterfly park underground water tank</li> <li>• Children park</li> <li>• Commercial Park</li> <li>• Gulashan-E-Zainab Park</li> <li>• Gulashn-E Amber Park</li> <li>• Pilon Sign Board Glow Park</li> <li>• Residential Park</li> </ul>

# LIST OF MEGA HOUSING PROJECTS

## 2. New Metro City, Sarai Alamgir Phase 1&2 (2023) 15,000 Kanals

Scope of Services	Project Name
<ul style="list-style-type: none"> <li>• Design of residential &amp; Commercial Buildings</li> <li>• Design of parks, roads, water supply, sewerage</li> <li>• Soil Investigation</li> <li>• Allied Amenities</li> <li>• Project Management</li> <li>• Supervision</li> <li>• Quality Check &amp; Control</li> <li>• Quantity Surveying</li> <li>• Vetting of Bills</li> <li>• Project Budget Management</li> </ul>	<ul style="list-style-type: none"> <li>• Community center tanks</li> <li>• Pipe culver</li> <li>• Pipe culvert, wing wall, and retaining wall</li> <li>• Drain</li> <li>• Eiffel villas 6-marla</li> <li>• Gabion along nullah main phase-1 ext</li> <li>• Design of boundary wall for the peripheral road with Pabbi Forest</li> <li>• Gate house phase-2</li> <li>• Head office</li> <li>• Hospital</li> <li>• Rasheeda begum mosque</li> <li>• Overhead water tank phase-1 and phase-2</li> <li>• Pump room residence</li> <li>• Residence</li> </ul>

# LIST OF MEGA HOUSING PROJECTS

## 3. New Metro City, Mandi Bahauddin (2023) 1,600 Kanals

Scope of Services	Project Name
<ul style="list-style-type: none"> <li>• Design of residential &amp; Commercial Buildings</li> <li>• Design of parks, roads, water supply, sewerage</li> <li>• Soil Investigation</li> <li>• Allied Amenities</li> <li>• Project Management</li> <li>• Supervision</li> <li>• Quality Check &amp; Control</li> <li>• Quantity Surveying</li> <li>• Vetting of Bills</li> <li>• Project Budget Management</li> </ul>	<ul style="list-style-type: none"> <li>• 5-marla supreme villas</li> <li>• 7-marla model house stair</li> <li>• CCTV mart</li> <li>• Clock tower</li> <li>• 5-marla villas expansion joints details</li> <li>• Glow park light pole</li> <li>• Mosque</li> <li>• Mosque</li> <li>• Mosque Bilal</li> <li>• Residence</li> <li>• Glow park</li> <li>• Pylon sign board at Glow Park</li> <li>• Water body</li> <li>• B-block park</li> <li>• Entrance park</li> <li>• Gazebo</li> </ul>

# LIST OF MEGA HOUSING PROJECTS

## 4. New Metro City, Lahore

Scope of Services	Project Name
<ul style="list-style-type: none"> <li>• Design of residential &amp; Commercial Buildings</li> <li>• Design of parks, roads, water supply, sewerage</li> <li>• Soil Investigation</li> <li>• Allied Amenities</li> <li>• Project Management</li> <li>• Supervision</li> <li>• Quality Check &amp; Control</li> <li>• Quantity Surveying</li> <li>• Vetting of Bills</li> <li>• Project Budget Management</li> </ul>	<ul style="list-style-type: none"> <li>• Amber mosque</li> <li>• Civil lab</li> <li>• Drains</li> <li>• Gate house</li> <li>• Head office</li> <li>• Lahore container site dealer container</li> <li>• Linear park-1</li> <li>• Linear park-2</li> <li>• Linear park-3</li> <li>• Sports complex and gym museum</li> <li>• Staff residence</li> <li>• Store PEB shed</li> </ul>

# LIST OF MEGA HOUSING PROJECTS

Sr.#	Project Name	Scope of Service
5.	Golf City Gawader (2023) 4,050 Kanals	<ul style="list-style-type: none"> <li>• Design of Residential &amp; Commercial Buildings</li> <li>• Design of parks, roads, water supply, sewerage</li> <li>• Soil Investigation</li> <li>• Allied Amenities</li> <li>• Project Management</li> <li>• Supervision</li> <li>• Quality Check &amp; Control</li> <li>• Quantity Surveying</li> <li>• Vetting of Bills</li> <li>• Project Budget Management</li> </ul>
6.	All houses of Defence Raya Golf & Country Club Lahore Phase I	<ul style="list-style-type: none"> <li>• Structural Design</li> <li>• Public Health Design</li> <li>• Electrical Design</li> <li>• Soil Investigation</li> <li>• Supervision</li> </ul>
7.	All houses of Defence Raya Golf & Country Club Lahore Phase II	<ul style="list-style-type: none"> <li>• Structural Design</li> <li>• Public Health Design</li> <li>• Electrical Design</li> <li>• Soil Investigation</li> <li>• Supervision</li> </ul>
8.	Valencia Homes II (120 Town Houses) (2006)	Structural Design Public Health Design Electrical Design Soil Investigation Supervision

## LIST OF MEGA HOUSING PROJECTS

Sr.#	Project Name	Scope of Service
9.	Valencia Homes I (117 Town Houses)	<ul style="list-style-type: none"> <li>• Structural Design</li> <li>• Public Health Design</li> <li>• Electrical Design</li> <li>• Soil Investigation</li> <li>• Supervision</li> </ul>
10.	250 town houses of 14 types in Garden City, Bahria Town, Rawalpindi	<ul style="list-style-type: none"> <li>• Structural Design</li> <li>• Public Health Design</li> <li>• Electrical Design</li> <li>• Soil Investigation</li> <li>• Topographic Survey</li> <li>• Supervision</li> </ul>
11.	100 townhouses of different types in Golf City New Murree	<ul style="list-style-type: none"> <li>• Structural Design</li> <li>• Public Health Design</li> <li>• Electrical Design</li> <li>• Soil Investigation</li> <li>• Topographic Survey</li> <li>• Supervision</li> </ul>
12.	Consultancy for Engineering Design of Rail Track – Changa Manga Wildlife Reserve Client: Wildlife and Parks Department, Punjab (PMU)	<ul style="list-style-type: none"> <li>• Design of track alignment (horizontal and vertical profile)</li> <li>• Design of rail section, sleepers, and fastening system</li> <li>• Design of formation, embankment profiles, and subgrade improvement measures</li> <li>• Design of the drainage system along the track alignment</li> <li>• Incorporation of geotechnical recommendations into the design</li> <li>• Compliance with relevant engineering codes and safety standards in the design</li> <li>• Identification of design gaps, risks, and technical deficiencies during the design process</li> <li>• Provision of final design approval with justified technical comments</li> </ul>

## LIST OF FEW DESIGNED PROJECTS

Sr.#	Project Name	Scope of Service
1	Extension of Haleeb Foods Plant Bhai Phayru	<ul style="list-style-type: none"> <li>• Structural Design</li> <li>• Public Health</li> <li>• Design Supervision</li> </ul>
2	Haleeb Foods (Pvt.) Ltd Plant Rahim Yar Khan (2004)	<ul style="list-style-type: none"> <li>• Structural Design</li> <li>• Public Health</li> <li>• Design Supervision</li> </ul>
3	Extension & Rehabilitation of Coca Cola Plant – Karachi(2005)	<ul style="list-style-type: none"> <li>• Structural Design</li> <li>• Public Health</li> <li>• Design Supervision</li> </ul>
4	Extension & Rehabilitation Coca Cola Plant Rahim Yar Khan (2005)	<ul style="list-style-type: none"> <li>• Structural Design</li> <li>• Public Health</li> <li>• Design Supervision</li> </ul>
5	Extension & Rehabilitation Coca Cola Plant Gujranwala	<ul style="list-style-type: none"> <li>• Structural Design</li> <li>• Public Health Design</li> <li>• Supervision</li> </ul>
6	Mughal Residential Apartments – Murree (2005)	<ul style="list-style-type: none"> <li>• Structural Design</li> <li>• Public Health Design</li> <li>• Supervision</li> </ul>
7	Murree Continental Complex – Murree	<ul style="list-style-type: none"> <li>• Structural Design</li> <li>• Public Health Design</li> <li>• Supervision</li> </ul>
8	8 storey commercial building in PIA, Colony Lahore	<ul style="list-style-type: none"> <li>• Structural Design</li> <li>• Public Health Design</li> <li>• Supervision</li> </ul>

Sr.#	Project Name	Scope of Service
9	Design/Construction of MSC Site for CM Pak Limited (Paktel)	<ul style="list-style-type: none"> <li>• Structural Design</li> <li>• Public Health</li> <li>• Design Supervision</li> </ul>
10	Younas Industries Sialkot	<ul style="list-style-type: none"> <li>• Structural Design</li> <li>• Public Health</li> <li>• Design Supervision</li> </ul>
11	Klass Textiles II Lahore (2005) (Pvt) Ltd at Raiwind Road	<ul style="list-style-type: none"> <li>• Structural Design</li> <li>• Public Health</li> <li>• Design Supervision</li> </ul>
12	Body Media Factory Ferozepur Road, Lahore(2005)	<ul style="list-style-type: none"> <li>• Structural Design</li> <li>• Public Health</li> <li>• Design Supervision</li> </ul>
13	Jubilee Plaza at Jubilee Town Lahore	<ul style="list-style-type: none"> <li>• Structural Design</li> <li>• Public Health Design</li> <li>• Electrical Design</li> <li>• Soil Investigation</li> <li>• Supervision</li> </ul>
14	Residential Apartments -U.S Apparel, Jaliana Road Lahore	<ul style="list-style-type: none"> <li>• Structural Design</li> <li>• Public Health Design</li> <li>• Supervision</li> </ul>
15	Anosh Plaza Izmir Town Lahore	<ul style="list-style-type: none"> <li>• Architectural Design</li> <li>• Structural Design</li> <li>• Public Health Design</li> <li>• Electrical Design</li> <li>• Supervision</li> </ul>

Sr.#	Project Name	Scope of Service
16	Gourmet Bakers (5-Buildings and Factory) in Lahore	<ul style="list-style-type: none"> <li>• Public Health Design</li> <li>• Electrical Design</li> <li>• Supervision</li> </ul>
17	Fazal Sweets Factory - Lahore	<ul style="list-style-type: none"> <li>• Structural Design</li> <li>• Public Health</li> <li>• Design Supervision</li> </ul>
18	Commercial building Bahria Town Lahore	<ul style="list-style-type: none"> <li>• Public Health Design</li> <li>• Electrical Design</li> <li>• Soil Investigation</li> <li>• Topographic Survey</li> <li>• Supervision</li> </ul>
19	Commercial Buildings in DHA	<ul style="list-style-type: none"> <li>• Structural Design</li> <li>• Public Health</li> <li>• Design Supervision</li> </ul>
20	Penna Overseas Corporation - Sialkot	<ul style="list-style-type: none"> <li>• Structural Design</li> <li>• Public Health</li> <li>• Design Supervision</li> </ul>
21	Metropolitan Bank Sialkot	<ul style="list-style-type: none"> <li>• Landscaping</li> <li>• Structural Design</li> <li>• Public Health Design</li> <li>• Supervision</li> </ul>
22	Marriage Hall Sialkot	<ul style="list-style-type: none"> <li>• Structural Design</li> <li>• Public Health Design</li> <li>• Supervision</li> </ul>

Sr.#	Project Name	Scope of Service
23	Capital Sports Sialkot	<ul style="list-style-type: none"> <li>• Structural Design</li> <li>• Public Health Design</li> <li>• Soil Investigation</li> <li>• Supervision</li> </ul>
24	Jimco Industries at Sialkot	<ul style="list-style-type: none"> <li>• Structural Design</li> <li>• Public Health</li> <li>• Design Supervision</li> </ul>
25	Forta Industries Sialkot	<ul style="list-style-type: none"> <li>• Structural Design</li> <li>• Public Health Design</li> <li>• Tender Documents</li> </ul>
26	Helicon Industries Sialkot	<ul style="list-style-type: none"> <li>• Structural Design</li> <li>• Public Health Design</li> </ul>
27	Industrial Building of K.M Sialkot Ashraf (Pvt) Ltd.	<ul style="list-style-type: none"> <li>• Structural Design</li> <li>• Public Health</li> <li>• Design Supervision</li> </ul>
28	Design/Construction of BSC Site for CM Pak Limited (Paktel),	<ul style="list-style-type: none"> <li>• Interior Design</li> <li>• Structural Design</li> <li>• Public Health Design</li> <li>• Electrical Design</li> <li>• Soil Investigation</li> <li>• Topographic Survey</li> <li>• Tender Documents</li> <li>• Supervision</li> </ul>
29	Mitsubishi Motors Gujranwala	<ul style="list-style-type: none"> <li>• Structural Design</li> <li>• Public Health Design</li> <li>• Supervision</li> </ul>

Sr.#	Project Name	Scope of Service
30	Banquet Hall at Mir Pur	<ul style="list-style-type: none"> <li>• Structural Design</li> <li>• Public Health Design</li> <li>• Electrical Design</li> <li>• Soil Investigation</li> </ul>
31	Baral Shopping Centre at Mangla	<ul style="list-style-type: none"> <li>• Structural Design</li> <li>• Public Health Design</li> <li>• Soil Investigation</li> </ul>
32	Multi-Storey Residential Peroxide Plant Apartments Sitara	<ul style="list-style-type: none"> <li>• Structural Design</li> <li>• Public Health Design</li> </ul>
33	Head Of ce Building D.G Cement Plant	<ul style="list-style-type: none"> <li>• Structural Design</li> <li>• Public Health Design</li> <li>• Electrical Design</li> <li>• Soil Investigation</li> <li>• Supervision</li> </ul>
34	Foreign Of ce Building, Islamabad	<ul style="list-style-type: none"> <li>• Structural Design</li> <li>• Soil Investigation</li> </ul>
35	Beacon House School Lahore	<ul style="list-style-type: none"> <li>• Structural Design</li> <li>• Public Health Design</li> <li>• Electrical Design</li> <li>• Soil Investigation</li> <li>• Supervision</li> </ul>
36	American International School – Canal Road, Lahore	<ul style="list-style-type: none"> <li>• Structural Design</li> <li>• Public Health Design</li> <li>• Soil Investigation</li> </ul>

Sr.#	Project Name	Scope of Service
37	10 storey 5-Star Hotel Building with 5 storey Golf Club House (3 Buildings) in Golf City (Bahria Town), New Murree	<ul style="list-style-type: none"> <li>• Structural Design</li> <li>• Public Health Design</li> <li>• Electrical Design</li> <li>• Soil Investigation</li> <li>• Supervision</li> </ul>
38	10 story Apartment Building at Canal Road, Garden Town, Lahore	<ul style="list-style-type: none"> <li>• Structural Design</li> <li>• Public Health Design</li> <li>• Electrical Design</li> <li>• Soil Investigation</li> <li>• Supervision</li> </ul>
39	Oasis, Farm Houses ( Badian Road, Lahore project of Bahria Town),	<ul style="list-style-type: none"> <li>• Structural Design</li> <li>• Public Health Design</li> <li>• Electrical Design</li> <li>• Soil Investigation</li> <li>• Topographic Survey</li> <li>• Supervision</li> </ul>
40	16 story, 12 storey and 8 storey Triplet towers (Vaquero West Heights), Garden City, Bahira Town, Rawalpindi	<ul style="list-style-type: none"> <li>• Structural Design</li> <li>• Public Health Design</li> <li>• Electrical Design</li> <li>• Soil Investigation</li> <li>• Topographic Survey</li> <li>• Supervision</li> </ul>
41	Main Office Building for U.S Road Lahore Apparel at Defence	<ul style="list-style-type: none"> <li>• Architectural Design</li> <li>• Structural Design</li> <li>• Public Health Design</li> <li>• Supervision</li> </ul>
42	12 storey Doburj Shopping Mall Faisalabad Loweri Tunnel	<ul style="list-style-type: none"> <li>• Structural Design</li> <li>• Public Health Design</li> <li>• Supervision</li> </ul>

Sr.#	Project Name	Scope of Service
43	Squash Club in DHA	<ul style="list-style-type: none"> <li>• Structural Design</li> <li>• Supervision</li> </ul>
44	Loweri Tunnel	<ul style="list-style-type: none"> <li>• Structural Design</li> </ul>
45	Mian Mansha Farm House	<ul style="list-style-type: none"> <li>• Structural Design</li> <li>• Public Health Design</li> <li>• Soil Investigation</li> <li>• Supervision</li> </ul>
46	KFC Allama Iqbal Town Lahore	<ul style="list-style-type: none"> <li>• Structural Design</li> <li>• Public Health Design</li> <li>• Supervision</li> </ul>
47	KFC Sialkot	<ul style="list-style-type: none"> <li>• Structural Design</li> <li>• Public Health Design</li> <li>• Electrical Design</li> <li>• Non-Destructive Testing</li> <li>• Supervision</li> </ul>
48	KFC Defence H Block Lahore	<ul style="list-style-type: none"> <li>• Non-Destructive Testing</li> <li>• Supervision</li> </ul>
49	Salt n Pepper Gulber g Lahore	<ul style="list-style-type: none"> <li>• Structural Design</li> <li>• Public Health Design</li> <li>• Supervision</li> </ul>

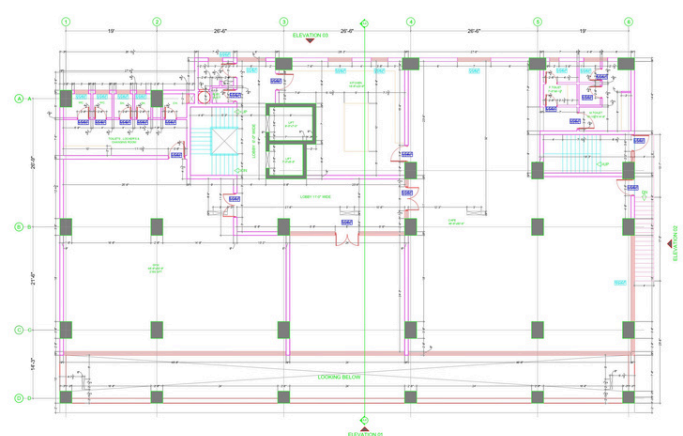
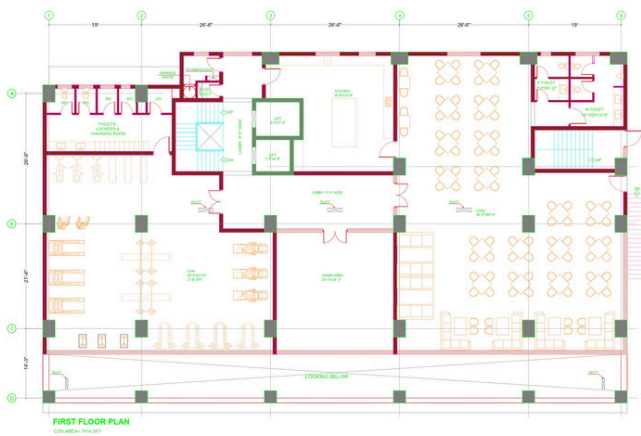
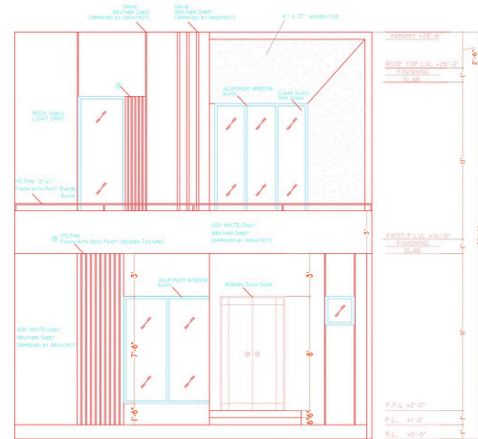
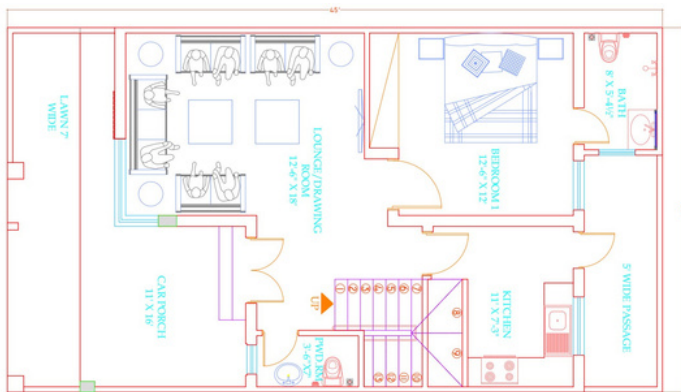
Sr.#	Project Name	Scope of Service
50	Salt N Pepper Village MM Alam Road Lahore	<ul style="list-style-type: none"> <li>• Landscaping</li> <li>• Structural Design</li> <li>• Public Health Design</li> <li>• Supervision</li> </ul>
51	Salt N Pepper Mall Road Lahore	<ul style="list-style-type: none"> <li>• Structural Design</li> <li>• Public Health Design</li> <li>• Electrical Design</li> <li>• Supervision</li> </ul>
52	Arc DE Triomphe Garden city Bahria Town Rawalpindi	<ul style="list-style-type: none"> <li>• Structural Design</li> <li>• Supervision</li> </ul>
53	Hamza Foundation Centre of exclence for deaf and dumb at Johar Town, Lahore	<ul style="list-style-type: none"> <li>• Structural Design</li> <li>• Public Health Design</li> <li>• Supervision</li> </ul>
54	Fort Villas at W Block DHA Town Houses	<ul style="list-style-type: none"> <li>• Structural Design</li> <li>• Public Health Design</li> <li>• Supervision</li> </ul>
55	US Apparel Executive Hostel at Defence Road Lahore	<ul style="list-style-type: none"> <li>• Structural Design</li> <li>• Public Health Design</li> <li>• Supervision</li> </ul>
56	Style Textile Composite Unit at Kot Lakhpat Lahore	<ul style="list-style-type: none"> <li>• Structural Design</li> <li>• Public Health Design</li> <li>• Supervision</li> </ul>

Sr.#	Project Name	Scope of Service
57	Multi Storied Building for SGS Labs at Multan Road Lahore	<ul style="list-style-type: none"> <li>• Structural Design</li> <li>• Public Health Design</li> <li>• Soil Investigation</li> <li>• Supervision</li> </ul>
58	Society Of ce Building for Izmir Society	<ul style="list-style-type: none"> <li>• Structural Design</li> <li>• Public Health Design</li> <li>• Supervision</li> </ul>
59	U.S Apparel III Stitching Unit at Ferozpur Road Lahore	<ul style="list-style-type: none"> <li>• Structural Design</li> <li>• Public Health Design</li> <li>• Supervision</li> </ul>
60	Stitching Unit for MASH (Pvt) at Ferozpur Road Lahore	<ul style="list-style-type: none"> <li>• Structural Design</li> <li>• Public Health Design</li> <li>• Supervision</li> </ul>
61	Mosque at Izmir Society Lahore	<ul style="list-style-type: none"> <li>• Structural Design</li> <li>• Public Health Design</li> <li>• Supervision</li> </ul>
62	Mosque at Diamond Fibers and safhire Fibers at Sheikhpura	<ul style="list-style-type: none"> <li>• Structural Design</li> <li>• Public Health Design</li> </ul>
63	Of ce Complex for Abbasi and Company at Shadman Lahore	<ul style="list-style-type: none"> <li>• Structural Design</li> <li>• Public Health Design</li> <li>• Supervision</li> </ul>
64	Maryam Children Hospital at Layyah	<ul style="list-style-type: none"> <li>• Structural Design</li> <li>• Public Health Design</li> <li>• Soil Investigation</li> <li>• Supervision</li> </ul>

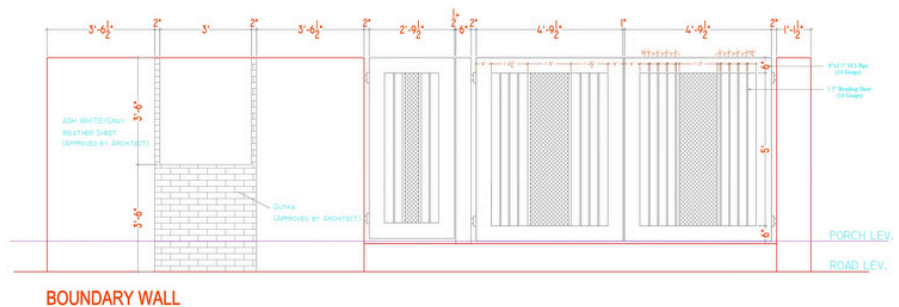
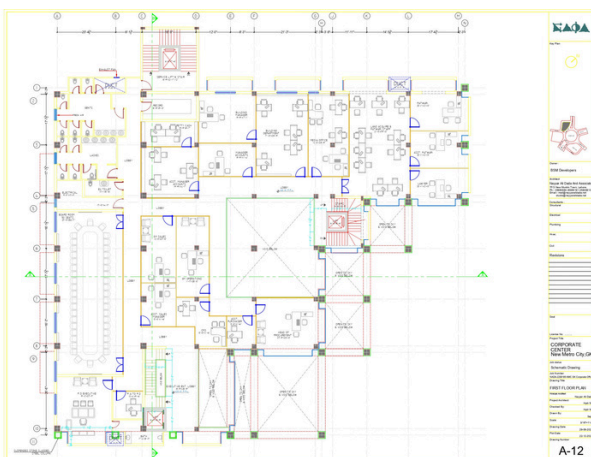
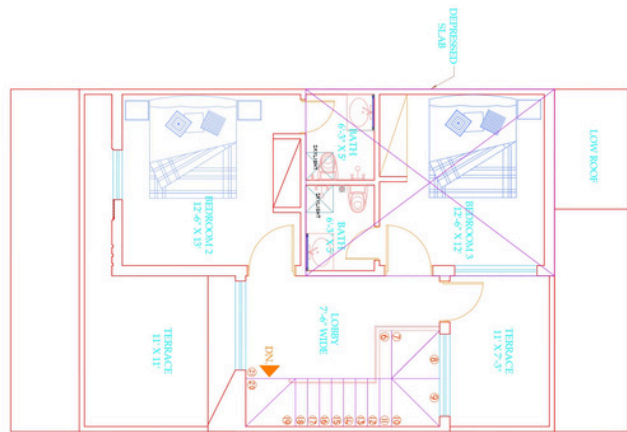
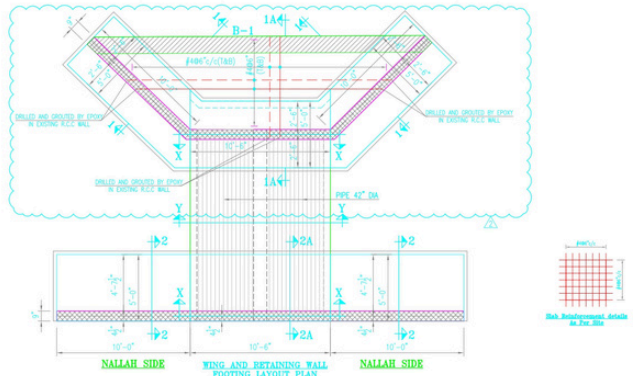
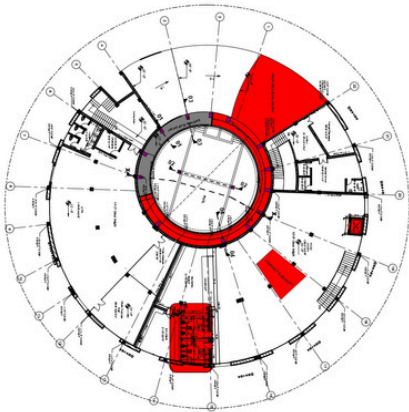
In addition to the above, we have designed many schools, hospitals, residential and commercial buildings up to 11 storeys, and large-scale farm houses.

We have also designed many buildings and houses ranging from 3000 sft to 100,000 sft (single building)

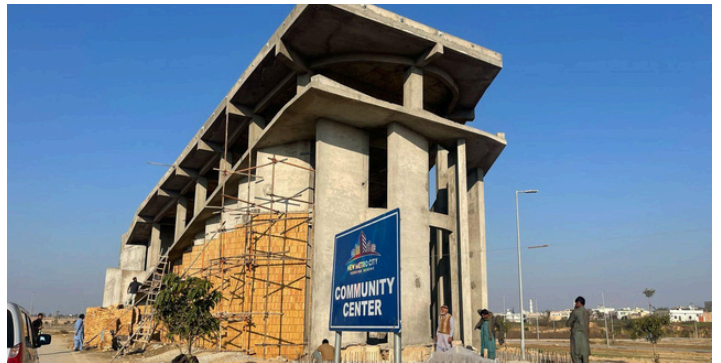
## DESIGN CONSULTANCY



# Profile



# COMMERCIAL & RESIDENTIAL PROJECTS



# Profile



# Profile



# Profile



# Profile



# PROJECT MANAGEMENT & SUPERVISION



# Profile



# MEGA INFRASTRUCTURE PROJECTS



# Profile



# Profile



# Profile



# Profile



## GSM INFRASTRUCTURE PROJECTS

Type of Tower	No of Sites Designed for Various Companies						
	Alan Dick	Paktel	Nokia	Novia Com	World Call	Warid	U-Fone
Green Field	54	90	478	93	47	13	23
Roof Top	105	13	141	80	21	07	12

**EXPERIENCE IN OMC SECTOR:  
COMPLETE CIVIL MECHANICAL  
& ELECTRICAL ENGINEERING DESIGN,  
PROJECT MANAGEMENT, CONSTRUCTION  
& COMMISSIONING**

PROJECT LIST ►►

# LIST OF OIL STORAGE DEPOTS EPC PROJECTS

Sr. #	Client	Location	Capacity	No. of Tanks	Piping Dia inch
1	Gas and Oil Pakistan Limited	Sahiwal	27800 MT	7	6500
2	Gas and Oil Pakistan Limited	Daulatpur	13,960 MT	6	6700
3	Gas and Oil Pakistan Limited	Sarai Naurang	12,010 MT	6	6700
4	Gas and Oil Pakistan Limited	Kotla Jam Bhakkar	8310 MT	11	7800
5	Gas and Oil Pakistan Limited	Mehmoodkot	84,500 MT	7	32000
6	Gas and Oil Pakistan Limited	Hub Balochistan	12,676 MT	4	10,000
7	Gas and Oil Pakistan Limited	Vehari	20,590 MT		20,000
8	Taj Petroleum	Shikarpur	14,950 MT	3	
9	Zoom Petroleum	Patoki Bulk	1,982 MT	1	1000
10	My Petroleum	Mir pur Khas	1600 MT	3	5000

# DESIGN & CONSTRUCTION OF BULK OIL DEPOTS

DESIGN, CONSTRUCTION, PRE-COMMISSIONING & COMMISSIONING OF BULK OIL DEPOTS								
Supply, Fabrication, Installation & Erection of Tanks Experience Summary								
Sr #	Client	Capacity	UOM	Diameter	Height	Quantity	Completion Year	Location
				Feet	Feet			
1	Pakistan State Oil	7500	MT	30.2	10.4	1	2022	Keamari
2	Pakistan State Oil	5200	MT	27.4	8.8	1	2022	Keamari
3	Pakistan State Oil	26,700	KL	43.5	18.0	1	2023	Faisalabad
4	Pakistan State Oil	12,000	KL	28.1	19.5	1	2023	Faqirabad
5	Pakistan State Oil	22,900	KL	38.7	19.5	1	2023	Faqirabad
6	Shell Pakistan	10000	MT	103.35	64.0	1	2021	Machike
7	Shell Pakistan	5000	MT	72.182	64.0	1	2021	Shikarpur
8	Gas & Oil Pakistan	2776	MT	54.0	59.5	1	2016	Hub, Balochistan
9	Gas & Oil Pakistan	4950	MT	67.0	59.5	2	2016	Hub, Balochistan
10	Gas & Oil Pakistan	330	CUM	25.0	25.0	1	2016	Hub, Balochistan
11	Gas & Oil Pakistan	18350	MT	143.0	59.1	1	2018	Mehmoodkot, Punjab
12	Gas & Oil Pakistan	8015	MT	94.5	59.1	1	2018	Mehmoodkot, Punjab
13	Gas & Oil Pakistan	13515	MT	116.5	59.1	3	2018	Mehmoodkot, Punjab
14	Gas & Oil Pakistan	12365	MT	108.5	59.1	1	2018	Mehmoodkot, Punjab
15	Gas & Oil Pakistan	1320	CUM	39.4	39.4	1	2018	Mehmoodkot, Punjab
16	Gas & Oil Pakistan	300	MT	13.8	96.8	3	2014	Sahiwal, Punjab
17	Gas & Oil Pakistan	1750	MT	52.5	34.4	2	2014	Sahiwal, Punjab
18	Gas & Oil Pakistan	5875	MT	78.7	59.1	2	2014	Sahiwal, Punjab
19	Gas & Oil Pakistan	1180	MT	43.0	36.1	2	2016	Daulatpur, Sindh
20	Gas & Oil Pakistan	400	MT	13.8	137.8	4	2016	Daulatpur, Sindh
21	Gas & Oil Pakistan	1180	MT	43.0	36.1	2	2017	Sarai Naurang, KPK
22	Gas & Oil Pakistan	400	MT	13.8	137.8	4	2017	Sarai Naurang, KPK
23	Gas & Oil Pakistan	1745	MT	43.8	49.2	2	2018	Bhakkar, Punjab
24	Gas & Oil Pakistan	1095	MT	34.6	49.2	3	2018	Bhakkar, Punjab
25	Gas & Oil Pakistan	415	MT	13.8	152.6	6	2018	Bhakkar, Punjab
26	Gas & Oil Pakistan	14310	MT	124.7	59	1	2020	Vehari
27	Gas & Oil Pakistan	6280	MT	75.45	59	1	2020	Vehari
28	Taj Petroleum	5500	MT	72.182	59	1	2017	Shikarpur
29	Taj Petroleum	3300	MT	60	59	1	2017	Shikarpur
30	Zoom Petroleum	2611	MT	50.2	47.6	1	2018	Patoki
31	My Petroleum	380	MT	10.5	221.45	1	2018	MirPur Khas
32	My Petroleum	1220	MT	44.0	34.45	1	2018	MirPur Khas

## LIST OF SHELL PAKISTAN PROJECTS

Sr. #	Project Name	Location
1	Engineering Procurement & Construction of MOGAS storage tanks	Machike and Shikarpur
2	Fire Frightening System up gradation at Machike Installation	Machike
3	Replacement of Non Ex Rating Items at Gantry Control Room	Chaklala, TaruJabba Machike & Shikarpur
4	Up gradation of piping at Shikarpur Terminal	Shikarpur
5	Moving UG to AG Piping Installation	Chak lala
6	Raising of Dike Walls	Chak lala
7	UG to AG Piping Installation at Shell Taru Jabba	Taru Jabba
8	Security Enhancement at Shell Chaklala	Chak lala
9	Security Enhancement at Shell Taru Jabba	Taru Jabba
10	Pump Replacement at Shell Taru Jabba	Taru Jabba
11	Drainage System Upgradation at Shell Taru Jabba	Taru Jabba
12	Gensets Foundation Program at SPL Daulatpur Terminal	Daulatpur Terminal
13	Gensets Foundation Program at SPL Shikarpur Terminal	Shikarpur
14	Extension of VDU System at SPL MCH Terminal	Machike
15	Installation of Temperature Relief Valve	Machike
16	Replacement of UG to AG piping at TJB	Taru Jabba
17	Terminal Hard standing at DLP	Daulatpur

# LIST OF RETAIL OUTLETS

Sr. #	Company Name	Project Title
1	Gas & Oil Pakistan Limited	(EPC) construction of filling station Johar town Akber chowk B -1
2	Gas & Oil Pakistan Limited	(EPC) construction of Haider – I Petrol Pump, Rawalpindi
3	Gas & Oil Pakistan Limited	(EPC) construction of Bhara Kho Filling Station
4	Gas & Oil Pakistan Limited	(EPC) construction of Fiaz Filling Station
5	Gas & Oil Pakistan Limited	(EPC) construction of 30 – B Faisal town Fueling station
6	Gas & Oil Pakistan Limited	(EPC) construction of Filling Station Walton Road
7	Gas & Oil Pakistan Limited	(EPC) construction of Haider – II Petrol Pump
8	Gas & Oil Pakistan Limited	(EPC) construction of Sitara Chung Filling Station
9 10	Gas & Oil Pakistan Limited	(EPC) construction of Mozang filling station
11	Gas & Oil Pakistan Limited	(EPC) construction of Sabzazar filling station
12	Gas & Oil Pakistan Limited	(EPC) construction of Mangla filling station
13	Gas & Oil Pakistan Limited	(EPC) construction of Johar town filling station FTC expo
14	Gas & Oil Pakistan Limited	(EPC) construction of Retail outlets at Uch sharif
15	Gas & Oil Pakistan Limited	(EPC) construction of Retail outlets at Azampur
16	Gas & Oil Pakistan Limited	(EPC) construction of Sara – e- Alamgir Retail outlet
17	Gas & Oil Pakistan Limited	EPC of Moon Market Lahore
18	Gas & Oil Pakistan Limited	EPC of UET Retail Outlet Lahore
19	Gas & Oil Pakistan Limited	EPC of Firdous Market Retail Outlet Lahore
20	Gas & Oil Pakistan Limited	EPC of Shadman Retail outlet Lahore
21	Gas & Oil Pakistan Limited	(EPC) construction of Qutab – ud- din
22	Gas & Oil Pakistan Limited	EPC of Retail Outlets at Kamra Attock
23	Gas & Oil Pakistan Limited	EPC of Retail Outlet at Khanewal
24	Gas & Oil Pakistan Limited	EPC of Retail Outlet at Sargodah Canal Road
25	Gas & Oil Pakistan Limited	EPC of Retail Outlet at Wahdat Road, Lahore
26	Gas & Oil Pakistan Limited	EPC of Retail Outlet at Shahdrah G.T Road, Lahore
27	Total Parco	CONSTRUCTION OF SS FILLING STATION
28	Total Parco	CONSTRUCTION OF CAVALRY FILLING STATION
29	Shell Pakistan Limited (Meinhardt)	Construction of SPL NTI Site – Jinnah Avenue Karachi
	Shell Pakistan Limited (Meinhardt)	Construction of KDR site & Premium Toilets at Rahi FS, Multan

## LIST OF FEW ASSOCIATES

- Pro le – Architectural Consultancy (*Principal Architect: Ghayyoor Obaid*)
- Nayyer Ali Dada & Associates
- Chishti Brothers
- Designerseast (*Principal Architects: Nasir Mehmood*)
- SR Design Works (*Principal Architects: Saad and Rashid*)
- Abid Suhail & Associates (*Principal Architect: Abid Suhail*)
- Sam Architects (*Principal Architect: Saleem*)
- Yasir Mehmood & Associates (*Principal Architect: Yasir Mehmood*)
- RQ Associates (*Principal Architect: Rizwan Qadeer*)
- Dynamic Consultants (*Principal Architect: Kahif Muneer*)
- Burhan Shah Associates (*Principal Architect: Burhan Shah*)
- Babar Associates (*Principal Architect: Seed Ullah Babar*)
- Studio III (*Principal Architect: Ehtisham*)
- Arcare (*Principal Architect: Nawab Nayer Afzal*)
- Genesis (*Principal Archtiect: Waseem Khan*)
- Fuad Associates (*Principal Archtiect: Fuad Ahmad*)
- Divine Gardens



## EZYPRO SOFTWARE



[Support](#) [Terms](#) [Privacy](#)

EN

### Login

Email

Password

[Forgot your password?](#)

Login

[Don't have an account? Register](#)



A Product of SHAHZAD AYUB ASSOCIATES ® developed by HISBinary



**SOFTWARE INDUSTRY, OF INTRODUCING OUR STATE-OF-THE-ART BILLING DESIGNED SPECIFICALLY FOR THE CONSTRUCTION OFFERING A SEAMLESS EXPERIENCE FOR BIDDING, CONTRACTOR FILILIZATION, WORK ORDERS, DRAWINGS, BOQS (BILL QUANTITY), CHECK REQUESTS, QUALITY ASSURANCE/QUALITY CONTROL, IPC REPORTS (INTERIM PAYMENT CERTIFICATE), LIABILITY SHEETS, LIVE MONITORING OF PROJECTS AND DIFFERENT TYPES OF REPORTS.**



# SHAHZAD AYUB ASSOCIATES

ARCHITECTS, ENGINEERS & PROJECT MANAGERS

## GET IN TOUCH

Let's connect and build something exceptional together.



### EMAIL

info@shahzadayub.com

basil@shahzadayub.com

shahzad@shahzadayub.com

farooq.akhtar@shahzadayub.com



### Website

[www.shahzadayub.com](http://www.shahzadayub.com)



### Phone Number

+92-300-4008697

UAN: 042-111-000-722



### Address

34-P1 Valencia Town Lahore